

**REGIONAL SPECIALISED METEOROLOGICAL CENTRE-TROPICAL CYCLONES, NEW DELHI
TROPICAL WEATHER OUTLOOK**

DEMS-RSMC TROPICAL CYCLONES NEW DELHI DATED 21.09.2023

TROPICAL WEATHER OUTLOOK FOR NORTH INDIAN OCEAN (THE BAY OF BENGAL AND THE ARABIAN SEA) VALID FOR NEXT 168 HOURS ISSUED AT 0600 UTC OF 21.09.2023 BASED ON 0300 UTC OF 21.09.2023.

BAY OF BENGAL:

YESTERDAY'S LOW PRESSURE AREA OVER NORTHWEST BAY OF BENGAL & ADJOINING WEST BENGAL-NORTH ODISHA COASTS NOW LAY OVER SOUTHEAST JHARKHAND & NEIGHBOURHOOD AT 0300 UTC OF TODAY, THE 21ST SEPTEMBER, 2023.

ASSOCIATED SCATTERED TO BROKEN LOW AND MEDIUM CLOUDS WITH EMBEDDED INTENSE TO VERY INTENSE CONVECTION LAY OVER JHARKHAND GANGETIC WEST BENGAL NORTH ORISSA. MINIMUM CLOUD TOP TEMPERATURE IS MINUS 93 DEG CEL.

THIS IS THE LAST UPDATE REGARDING THIS SYSTEM, AS THE SYSTEM HAS MOVED INLAND.

SCATTERED LOW AND MEDIUM CLOUDS WITH EMBEDDED INTENSE TO VERY INTENSE CONVECTION LAY OVER NORTH & CENTRAL BAY OF BENGAL AND SOUTH ANDAMAN SEA. SCATTERED LOW AND MEDIUM CLOUDS WITH EMBEDDED ISOLATED WEAK TO MODERATE CONVECTION OVER SOUTH BAY OF BENGAL & NORTH ANDAMAN SEA.

PROBABILITY OF CYCLOGENESIS (FORMATION OF DEPRESSION) DURING NEXT 168 HRS:

24 HOURS	24-48 HOURS	48-72 HOURS	72-96 HOURS	96-120 HOURS	120-144 HOURS	144-168 HOURS
NIL	NIL	NIL	NIL	NIL	NIL	NIL

ARABIAN SEA:

SCATTERED TO BROKEN LOW AND MEDIUM CLOUDS WITH EMBEDDED INTENSE TO VERY INTENSE CONVECTION LAY OVER NORTHEAST ARABIAN SEA. SCATTERED LOW AND MEDIUM CLOUDS WITH EMBEDDED MODERATE TO INTENSE CONVECTION LAY OVER NORTHWEST ARABIAN SEA, EASTCENTRAL & SOUTH ARABIAN SEA AND LAKSHADWEEP ISLANDS AREA.

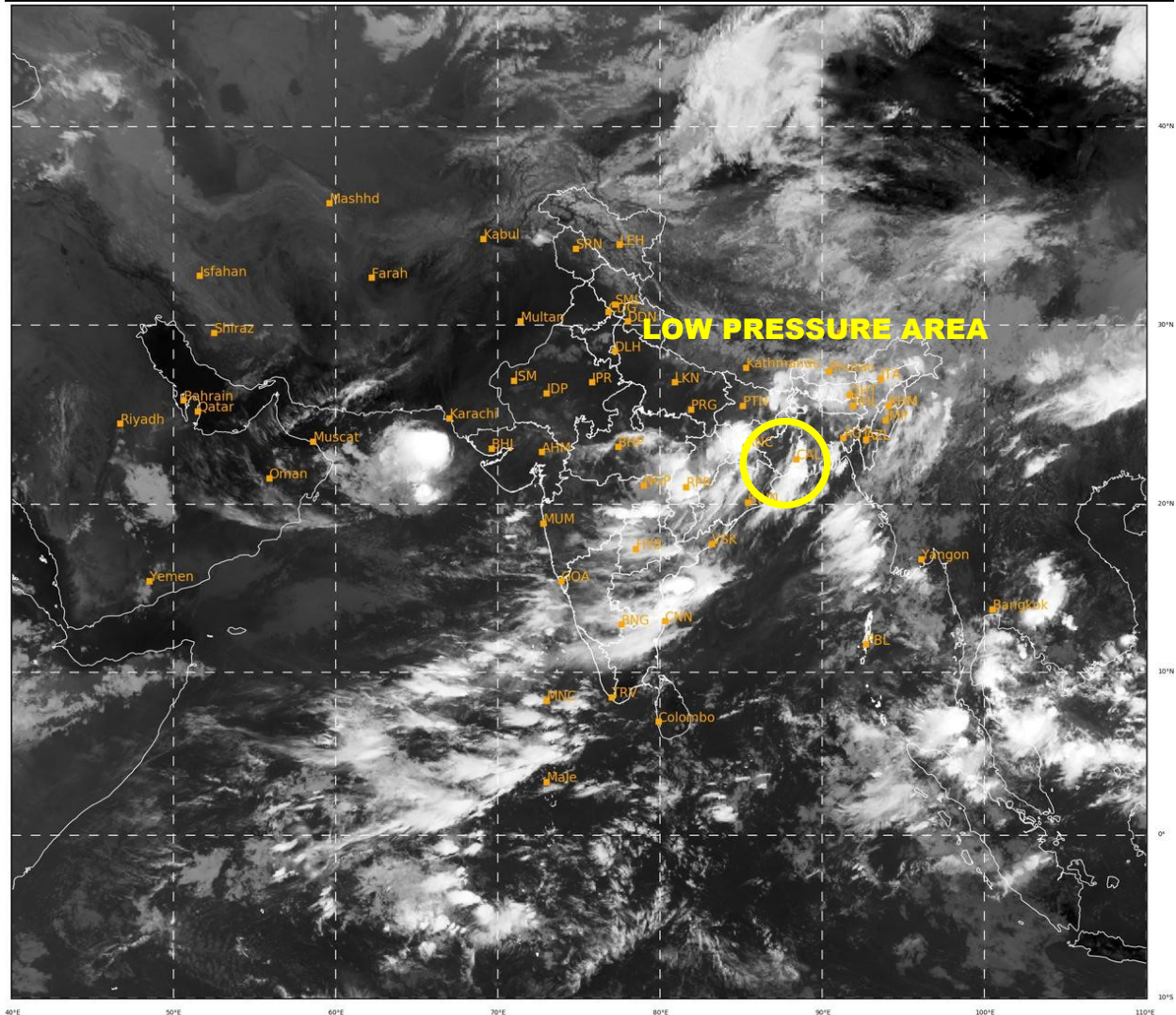
PROBABILITY OF CYCLOGENESIS (FORMATION OF DEPRESSION) DURING NEXT 168 HRS:

24 HOURS	24-48 HOURS	48-72 HOURS	72-96 HOURS	96-120 HOURS	120-144 HOURS	144-168 HOURS
NIL	NIL	NIL	NIL	NIL	NIL	NIL

Remarks: NIL

SAT : INSAT-3D IMG
IMG_TIR1 10.8 um
LIC Mercator

21-09-2023/(0300 to 0326) GMT
21-09-2023/(0830 to 0856) IST



438

928

IMD, DELHI

Cloud distribution: (a) Isolated: <25%, Scattered:25-50%, Broken: 51-75%, Solid:>75%, Convection Intensity: (a) Weak: Cloud Top Temperature (CTT) >-25°C, (b) Moderate: CTT: - 25°C to -40°C, (c) Intense: CTT: - 41°C to -70°C and (d) Very Intense: : Less than -70°C
PROBABILITY OF CYCLOGENESIS (FORMATION OF DEPRESSION):NIL: 0%, LOW: 1-33%, , MODERATE: 34-66% AND HIGH: 67-100%
This is a guidance Bulletin for WMO/ESCAP Panel Member countries. Visit respective National websites for Country specific Bulletins